

Specifications on YH-DD1

Dimensions and Weight

- Size ϕ 140 x 50 mm
- Weight 1000 g

Physical Properties

- Modulus of Rupture 278 kgf/cm²
- Compressive Strength 31.3 kgf/cm²
- Breaking Load 3,981 kgf
- Water Proof IP68
- Operating Temperature -40°C to +70°C
- Operating Time more than 12 hours
- Onset Point 150 - 350 LUX
- Charging Time 3 (sunny) to 8 (cloudy and rainy)



Lighting Properties

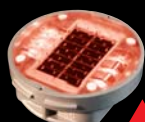
Model	Type	Color	Luminance(Lux)			Type	Color	Luminance(Lux)		
			average	min	max			average	min	max
YH-DD1	Steady	Red	19.0	14.5	23.4	Flashing	Red	23.8	18.8	28.7
		Green	19.0	13.4	24.5		Green	31.0	23.0	39.0
		Blue	27.6	22.7	32.5		Blue	28.9	23.2	34.5
		Yellow	10.9	7.6	14.2		Yellow	13.2	9.8	16.5
		White	37.4	22.7	52.1		White	38.9	23.7	54.0

※ Luminance (cd/m²) measurement : The luminance of 9 points on the lighting area measured and averaged.

Basic Components

Single Crystalline Solar Cell	Solar module Size Solar Maximum Output Power Solar Operating Current Solar Voltage	82 x 52 0.447W 150mA 2.98V
LED	LED Size LED Current LED Operating Current LED Voltage LED Wattage LED Quantities	ϕ 10(3.2V/20mA) 20mA per each 1.1mA per each 3V 0.019W 3PCS/6PCS
Pseudocapacitor	Pseudocapacitor Number of Pseudocapacitor	2.3V 120F 2 PCS
Poly Carbonate Housing		
Electronic Controller		

Colors



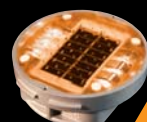
RED



GREEN



BLUE



ORANGE



WHITE

Specifications on YH-DD2

Dimensions and Weight

- Size 106 X 103 X 50 mm
- Weight 800 g

Physical Properties

- Modulus of Rupture 269 kgf/cm²
- Compressive Strength 30.5 kgf/cm²
- Breaking Load 3,715 kgf
- Water Proof IP67
- Operating Temperature -40°C to +70°C
- Operating Time more than 12 hours
- Onset Point 150 - 350 LUX
- Charging Time 3 (sunny) to 8 (cloudy and rainy)



Lighting Properties

Model	Type	Color	Luminance(Lux)			Type	Color	Luminance(Lux)		
			average	min	max			average	min	max
YH-DD2	Steady	Red	15.9	11.2	20.6	Flashing	Red	32.5	28.4	36.5
		Green	17.5	10.6	24.3		Green	19.3	11.2	27.3
		Blue	34.3	21.8	46.7		Blue	26.9	23.2	30.5
		Yellow	4.3	3.1	5.4		Yellow	6.6	5.7	7.4
		White	23.2	18.6	27.8		White	52.5	51.1	53.9

※ Luminance (cd/m²) measurement : The luminance of 9 points on the lighting area measured and averaged.

Basic Components

Single Crystalline Solar Cell	Solar module Size Solar Maximum Output Power Solar Operating Current Solar Voltage	52 x 48 0.357W 120mA 2.98V
LED	LED Size LED Current LED Operating Current LED Voltage LED Wattage LED Quantities	φ 10(3.2V/20mA) 20mA per each 1.1mA per each 3V 0.019W 3 pcs
Pseudocapacitor	Pseudocapacitor Number of Pseudocapacitor	2.3V 120F 1 PCS
Poly Carbonate Housing		
Electronic Controller		

Colors



Specifications on YH-YS

ORIONSOLAR Pty Ltd

www.orionsolar.com

07 5559-1666

Fax 07 5525-1906

Dimensions and Weight

- Size 110 X 90 X 32 mm
- Weight 380 g

Physical Properties

- Modulus of Rupture 58 kgf/cm²
- Compressive Strength 5.8 kgf/cm²
- Breaking Load 878 kgf
- Water Proof IP68
- Operating Temperature -40°C to +70°C
- Operating Time more than 12 hours
- Onset Point 150 - 350 LUX
- Charging Time 3 (sunny) to 8 (cloudy and rainy)



Lighting Properties

Model	Type	Color	Luminance(Lux)		
			average	min	max
YH-YS1	Steady	Red	20.7	13.5	27.8
		Green	73.3	50.4	96.1
		Blue	54.8	51.3	58.3
		Yellow	36.1	10.8	61.4
		White	52.9	48.3	57.5
	Flashing	Red	41.7	36.2	47.2
		Green	28.2	24.8	31.6
		Blue	22.1	20.8	23.3
		Yellow	49.2	45.6	52.7
		White	26.8	25.1	28.5
YH-YS2	Steady	Red	7.8	6.7	8.8
		Green	29.3	25.6	33.0
		Blue	42.5	32.6	52.3
		Yellow	7.6	4.3	10.9
		White	46.4	28.9	63.9
	Flashing	Red	32.4	22.9	41.9
		Green	40.8	33.6	47.9
		Blue	32.2	31.4	32.9
		Yellow	46.2	40.3	52.0
		White	34.1	32.2	35.9

※ Luminance (cd/m²) measurement : The luminance of 9 points on the lighting area measured and averaged.

Basic Components

Single Crystalline Solar Cell	Solar module Size Solar Maximum Output Power Solar Operating Current Solar Voltage	52 x 48 0.298W 100mA 2.98V
LED	LED Size LED Current LED Operating Current LED Voltage LED Wattage LED Quantities	∅10(3.2V/20mA) 20mA per each 1.1mA per each 3V 0.019W 3 pcs / 6 pcs
Pseudocapacitor	Pseudocapacitor Number ofPseudocapacitor	2.3V 120F 2 pcs
Poly Carbonate Housing		
Electronic Controller		

Colors



RED



GREEN



BLUE



ORANGE



WHITE

Specifications on YH-HL

Dimensions and Weight

- Size 110 X 90 X 45 mm
- Weight 320 g

Physical Properties

- Modulus of Rupture 49 kgf/cm²
- Compressive Strength 5.0 kgf/cm²
- Breaking Load 865 kgf
- Water Proof IP 67
- Operating Temperature -40°C to + 70°C
- Operating time more than 12 hours
- Onset Point 150-350 LUX
- Charging time 3 (sunny) to 8 (cloudy and rainy)



110 × 90 × 45 mm

Lighting Properties

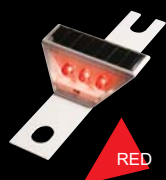
Model	Type	Color	Luminance(Lux)			Type	Color	Luminance(Lux)		
			average	min	max			average	min	max
YH-HL	Steady	Red	25.5	19.6	31.4	Flashing	Red	45.1	35.5	54.6
		Green	42.2	31.2	53.2		Green	44.8	34.5	55.0
		Blue	29.9	21.3	38.5		Blue	34.6	26.3	42.9
		Yellow	29.9	20.6	39.2		Yellow	41.6	32.1	51.1
		White	37.9	24.4	51.4		White	40.3	27.0	53.6

※ Luminance (cd/m²) measurement : The luminance of 9 points on the lighting area measured and averaged.

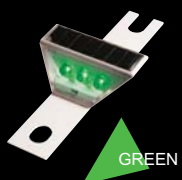
Basic Components

Single Crystalline Solar Cell	Solar module Size Solar Maximum Output Power Solar Operating Current Solar Voltage	90 x 25 0.200W 80mA 2.98V
LED	LED Size LED Current LED Operating Current LED Voltage LED Wattage LED Quantities	∅ 10(3.2V/20mA) 20mA per each 1.1mA per each 3V 0.019W 3 pcs
Pseudocapacitor	Pseudocapacitor Number of Pseudocapacitor	2.3V 120F 1 pcs
Poly Carbonate Housing		
Electronic Controller		

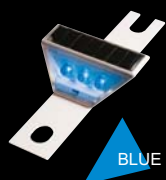
Colors



RED



GREEN



BLUE



ORANGE



WHITE

Specifications on YH-BA

Dimensions and Weight

- Size ϕ 72 x 150 mm
- Weight 260 g

Physical Properties

- Modulus of Rupture 32 kgf/cm²
- Compressive Strength 3.1 kgf/cm²
- Breaking Load 543 kgf
- Water Proof IP 67
- Operating Temperature -40°C to +70°C
- Operating time more than 12 hours
- Onset Point 150-350 LUX
- Charging time 3 (sunny) to 8 (cloudy and rainy)



Lighting Properties

Model	Type	Color	Luminance(Lux)			Type	Color	Luminance(Lux)		
			average	min	max			average	min	max
YH-BA	Steady	Red	22.4	10.6	34.2	Flashing	Red	27.9	12.1	43.7
		Green	42.2	31.2	53.2		Green	44.8	34.5	55.0
		Blue	18.1	12.3	23.8		Blue	25.2	13.4	36.9
		Yellow	20.0	15.3	24.6		Yellow	22.9	17.4	28.4
		White	28.1	18.6	37.5		White	30.5	19.3	41.6

※ Luminance (cd/m²) measurement : The luminance of 9 points on the lighting area measured and averaged.

Basic Components

Single Crystalline Solar Cell	Solar module Size Solar Maximum Output Power Solar Operating Current Solar Voltage	52 x 34 0.144W 72mA 2.0V
LED	LED Size LED Current LED Operating Current LED Voltage LED Wattage LED Quantities	ϕ 10(3.2V/20mA) 20mA per each 1.1mA per each 3V 0.019W 3 pcs
Pseudocapacitor	Pseudocapacitor Number of Pseudocapacitor	2.3V 120F 1 pcs
A.B.S Housing		
Electronic Controller		

Colors



RED



GREEN



BLUE



ORANGE



WHITE

Specifications on Ground Flasher

■ Dimensions and Weight

- Size $\phi 50 \times 35$ mm
- Weight 70 g

■ Physical Properties

- Modulus of Rupture
- Compressive Strength 24,517 N
- Breaking Load
- Water Proof IP 68
- Operating Temperature -40°C to $+70^{\circ}\text{C}$
- Operating time more than 12 hours
- Onset Point 150-350 LUX
- Charging time 3 (sunny) to 8 (cloudy and rainy)



■ Lighting Properties

Model	Type	Color	Luminance(Lux)		
			average	min	max
YH-YS1	Normal	Red	19.75	17	22.5
		Green	36.65	34.8	38.5
		Blue	20.45	18.6	22.3
		Yellow	19.9	18.6	21.2
		White	16.7	15.9	17.5
	Special	Red	88.85	38.7	139
		Green	34.85	28.7	41
		Blue	82.45	44.9	120
		Yellow	88.45	38.9	138
		White	63.8	23.6	104
	Steady	Red	48.6	39.2	58
		Green	48.05	38.6	57.5
		Blue	83.15	39.3	127
		Yellow	82.9	35.8	130
		White	51.6	41.2	62

※ Luminance (cd/m²) measurement : The luminance of 9 points on the lighting area measured and averaged.

■ Basic Components

Single Crystalline Solar Cell	Solar module Size Solar Maximum Output Power Solar Operating Current Solar Voltage	34 x 26 0.0894W 30mA 2.98V
LED	LED Size LED Current LED Operating Current LED Voltage LED Wattage LED Quantities	$\phi 3(3.2\text{V}/20\text{mA})$ 20mA per each 0.26mA 3V 0.0024W 1 pcs
Pseudocapacitor	Pseudocapacitor Number of Pseudocapacitor	2.3V 10F 3 pcs
Poly Carbonate Housing		
Electronic Controller		

Colors



RED



GREEN



BLUE



ORANGE



WHITE